

# Case story

## Flue Gas Cleaning system for StoraEnso - Sweden



**Filcon ApS**  
**Pilagervej 9**  
**DK-4200 Slagelse**  
**Phone: +45 40 21 78 02**  
**E-mail: [sa@filcon.dk](mailto:sa@filcon.dk)**  
**[www.filcon.dk](http://www.filcon.dk)**



## StoraEnso Hylte Mill Delivery of Flue Gas Cleaning system.

### Introduction:

Hylte Mill is a part of the world-wide group StoraEnso. At Hylte Mill approx. 800,000 tonnes of paper is produced per year. The paper is primarily used for manufacturing of newspapers.

### Purpose:

Upgrading of existent EPC plant to fulfil the EU emission demands.

### Why:

Due to the installation of a new oven with a bigger capacity and a change of the fuel, the existent Flue Gas system couldn't fulfil the national and internal emission demands.

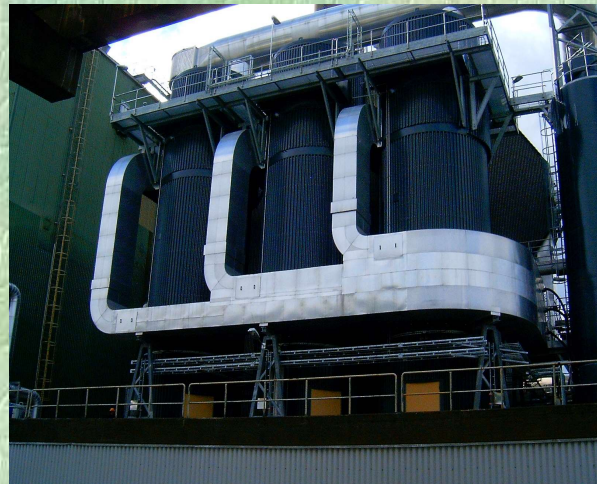


### Solution:

Delivery of three new Filcon filter modules with Discharge screw conveyors, ducts, service platforms and complete pneumatic conveying systems for transport of the residues to the Filcon Ash silo. In addition, a lime silo is supplied which adds lime into inlet ducts via a lance. The lances are strategically positioned so that the lime is evenly distributed in the ducts and Bag Filter modules.



Existent Flue Gas Cleaning system.



Three Filcon Filter modules.





Mounting of Filter 1



Mounting of Filter 2

The collected ash is handled in another delivery of Filcon (please see separate case story). A 600 m<sup>3</sup> silo with complete humidification system for the ashes is handling the capacity of approx. 2 days production af.



Pneumatic Conveyor below filter

### **Gennemførelse:**

All filter modles was delivered to Hylte Mill as complete units, incl. Insulation (Diameter = 4.7 m) and installed on top of an existent Building for ash handling. The complete installation was carried out in close cooperation with Hylte Mill, their consulting company, Filcon as well as local suppliers.

### **Conclusion:**

The Installation, commissioning and start up of the complete plant was done according to the time schedule and in a close cooperation with the plant operators. StoraEnso was satisfied with the supply, delivery and cooperation with Filcon, which lived up the their high demands and expectation.

